

The Scent of the Globe



Essential Oil
Aroma Diffuser

MUJI
無印良品



To the forest where Japanese Cypress is born

Make the scent, protect the forest. Extracting essential oil from the unused part of Japanese Cypress

Standing in the Japanese Cypress forest, a cool breeze brings out the fragrance of wood that makes one feel refreshed and calm. The northern part of Wakayama, at the foot of Koyasan. Located in the center of Kii Peninsula, a place where nature and human coexists, and a rich ecosystem with many trees preserved. One of the reason is through the hands of human. In this region, Japanese cedar and cypress have been planted for more than 100 years ago. With adequate sunlight and breeze between trees, thick and straight trees which can be used as building materials are cultivated through dense planting and periodic thinning. Using the timber from the forest thinning or curved wood which cannot be sold to the market, "Essential oil – Hinoki" is made.



The river Kii which flows at the foot of the mountain. It is being used to transport the woods since long time ago.



- 1) From the foot of the mountain, it takes 30 minutes by car to reach the shrine which is located at the top of the mountain. Greeting to the god of mountain and praying for the safety of workers.
- 2) Cutting Hinoki with a chainsaw into easy-to-carry lengths, leaving twigs and leaves to enrich the soil.



Hinoki brought to the lumber mill are numbered according to their weight and thickness. They are properly arranged in the lumber mill to make it easier to process in the distillery.



- 1) Cool the steam to return it to liquid.
- 2) Generating heat while stirring in the horizontal distiller, which was developed through many trial and errors in the process of making Hinoki essential oil.



The lumber is crushed to chips just before distillation. The moist chips give out the fragrance of Hinoki.

The moisture content of freshly cut Hinoki is about 50%. To prevent the loss of scent components, the processed Hinoki in the lumber mill are transported within a week to the distillery. In the distiller, the scent components are extracted by steaming through the chips. After distillation, the Hinoki chips are being dried and reused as fuel to produce heat in the boiler which generates the steam. About 3.5 litres of essential oil are extracted from one distillation of 350 kg of Hinoki. The fragrance of woods is densely condensed to only 1%.



The distilled liquid separates into essential oil and herb water after being left for some time. Let the herb water flow down from the bottom, leaving only the essential oil.



Visit to the manufacturer of aroma diffuser

Aroma diffuser is manufactured in Guangdong province, China. It is a delicate product which requires adjustment individually, problems such as "the power getting turned off earlier than timer setting" occurred at the beginning of the product release. In every occurrence, the cause of the problems was explored and verified in order to rectify the problems, and the product has now grown into a state where it can be said to be the face of MUJI.



The inspection of parts, moulding, assembly, and etc. are divided accordingly, each piece of aroma diffuser is carefully manufactured through the hands of about 30 people.



The assembled aroma diffuser goes through a process called ageing, which runs a three hours long testing, where the final product is completed and sent to MUJI all over the world.



Essential Oil エッセンシャルオイル

MUJI Essential Oil is made from 100% natural ingredients.
We have prepared a list of individual products made from the blessing of plants,
and a selection of blend to suit different moods and environments.

Mint & Wood

The Mint and Wood aroma is recommended for a refreshing time.



Eucalyptus

82575323	10ml	\$16.00
82575330	30ml	\$36.00

A sharp scent of the green leaves creates freshness in the living room, as well as the bathroom.



Tea Tree

82575279	10ml	\$26.00
82575286	30ml	\$56.00

Its clean and cool scent brightens the dull mood at the entranceway or toilet.



Peppermint

82575347	10ml	\$26.00
82575354	30ml	\$56.00

A refreshing and cool scent suitable for use in office or conference room where environment could be tensed up.



Cedar Wood

82575361	10ml	\$19.00
----------	------	---------

A heavy, dry and woody scent suitable to help you stay focused or for a relaxed mood.

Citrus

The Citrus aroma is recommended for a crisp time.



Sweet Orange

82575453	10ml	\$13.00
82575460	30ml	\$36.00

A popular, sweet fresh scent which is also a representative of the citrus group. It can be used anywhere ranging from places with many people to the bedroom.



Bergamot

82575477	10ml	\$26.00
82575484	30ml	\$56.00

A floral kind of citrus scent which is also used to aromatize Earl Grey black tea. Recommended to use in living room or bedroom for a relaxing mood.



Lemon

82575491	10ml	\$19.00
82575507	30ml	\$49.00

A favourable kind of sharp sourness yet revitalizing scent. Recommended to use in kitchen and dining area or for switching of mood.



Blood Orange

82575514	10ml	\$23.00
82575521	30ml	\$49.00

It gives out a juicy scent which is sweeter than Sweet Orange. Suitable for switching of mood or to feel relaxed.



Lime

82575538	10ml	\$23.00
82575545	30ml	\$49.00

A sharp and crisp scent with a unique kind of bitterness. Recommended to use in office and conference room to stay focused.



Grapefruit

82575309	10ml	\$16.00
82575316	30ml	\$36.00

A juicy citrus scent with bitterness. The refreshing scent is suitable for living room, study room, and bathroom.

Herb & Flower

Herb and Flower aroma is recommended for a relaxing time.



Lavender

82575378	10ml	\$23.00
82575385	30ml	\$53.00

A woody based gentle floral scent suitable for use in living or bedroom for a relaxing and calm mood.



Lemongrass

82575415	10ml	\$19.00
82575422	30ml	\$49.00

A sweet, powerful and vibrant lemon scent suitable to use for a new start or to brighten the mood.



Ylang-Ylang

82575293	10ml	\$33.00
----------	------	---------

A floral type of scent with a sense of deepness and exotic sweetness. Recommended to use when you want to get away from daily life and relax.



Rosemary

82575392	10ml	\$19.00
82575408	30ml	\$49.00

A refreshing cool scent with slight bitterness. Suitable for use in places like office to stay focused.



Geranium

82575439	10ml	\$29.00
82575446	30ml	\$73.00

An elegant floral aroma with resemblance to rose along with some green leaves freshness. Recommended to use when spending time with precious ones or in the bedroom.

Japanese-style Aroma

Aroma extracted from Japanese plants suitable for a time to feel relieved.



Japanese Cypress

82575552	10ml	\$26.00
82575569	30ml	\$66.00

A familiar forest-like scent extracted from unused Hinoki. Suitable to use in the closet or bedroom.



Iyokan

82575590	10ml	\$36.00
----------	------	---------

A fruity citrus scent with unique bitterness and smoothness. Recommended to use in the kitchen or bathroom where there is water flowing for a refreshing mood.



Yuzu

82575576	10ml	\$36.00
82575583	30ml	\$99.00

With a unique kind of sourness, its refined and warm citrus taste gives a sense of familiarity to the Japanese. Suitable for use in living room or welcoming guests.



Mikan

82575606	10ml	\$36.00
----------	------	---------

A citrus scent with slight sweetness and a tinge of green. Recommended to use in Japanese-style room or living room.

Blend Essential Oil

ブレンドエッセンシャルオイル

Personal Time

Relaxing

82575637	10ml	\$26.00
82575644	30ml	\$56.00

A gentle and calm fragrance recommended for relaxing time. With Lavender as the base, blended with Sweet Orange, Geranium, etc.

Sleeping

82575651	10ml	\$26.00
82575668	30ml	\$56.00

A calming aroma for relaxation time before sleep, blended with Bergamot, Sweet Orange, etc.

Travelling

82575613	10ml	\$26.00
----------	------	---------

Revitalizing and bright scent suitable for use during vacations or business trips. Blended with Sweet Orange, Lemongrass, Sweet Marjoram, etc.

Homing

82575620	10ml	\$26.00
----------	------	---------

A clear and refreshing aroma suitable for use at the entranceway or for a change of air. Blended with Eucalyptus, Bergamot, etc.

Working Time

Refreshing

82575705	10ml	\$26.00
82575712	30ml	\$56.00

A clear and refreshing fragrance recommended for a switch of feelings or in the office and conference rooms. Blended with Lemon, Lime, Eucalyptus, etc.

Unwinding

82575729	10ml	\$26.00
82575736	30ml	\$56.00

A fresh and bright fragrance recommended when you want to take a break. Blended with Lemon, Blood Orange, Juniper Berry, etc.

Morning

82575675	10ml	\$26.00
----------	------	---------

A refreshing fragrance to start your work every morning with positive feelings. Blended with blood orange, rosemary, juniper berry, etc.

Greeting

82575682	10ml	\$26.00
----------	------	---------

Aroma with elegance and familiarity suitable for use in guest rooms or welcoming guests. Blended with Lemon, Cypress, etc.

Calming

82575699	10ml	\$26.00
----------	------	---------

A refreshing and calming fragrance recommended for use when you want to concentrate your thoughts without rushing. Blended with Lemon, Rosemary, Cypress, etc.

Aroma Diffuser

アロマディフューザー

Ultrasonic diffuser, enjoy the natural aroma from essential oil without heat generated.



Ultrasonic Aroma Diffuser – Large

38380283	\$139.00
----------	----------

Characterized by its capability to let you enjoy aroma with ample amount of mist even in a large room.

Size: Approx. Diameter 168mm x Height 121mm (excluding projection)
 Continuous use time: Approx. 3 hours
 Suitable room size: 19.83m² to 24.79m² (12 to 15 tatami mats)
 Four timer settings: 180 / 120 / 60 / 30 minutes
 Capacity of water tank: Approx. 350ml
 Recommended essential oil usage: 7 to 10 drops



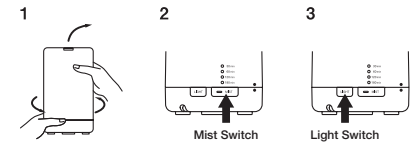
Ultrasonic Aroma Diffuser

21374953	\$89.00
----------	---------

Enjoy illumination together with aroma diffused using ultrasonic waves.

Size: approx. Diameter 80mm X Height 140mm (excluding projection)
 Continuous use time: approx. 3 hours
 Suitable room size: 9.92m² to 13.22m² (6 to 8 tatami mats)
 Four timer settings: 180 / 120 / 60 / 30 minutes
 Capacity of water tank: approx. 100ml
 Recommended essential oil usage: 2 to 3 drops

How to use Ultrasonic Aroma Diffuser



- 1) Remove the diffuser cover, add water and essential oil to the water tank, close the cover.
- 2) Press and hold the mist switch button at the back of the diffuser, the aroma will start to diffuse together with the mist. Set the timer to any of the four settings available.
 ※ 180 / 120 / 60 / 30 minutes
- 3) Press the light switch button at the back of the diffuser to adjust the LED light to two level of brightness.

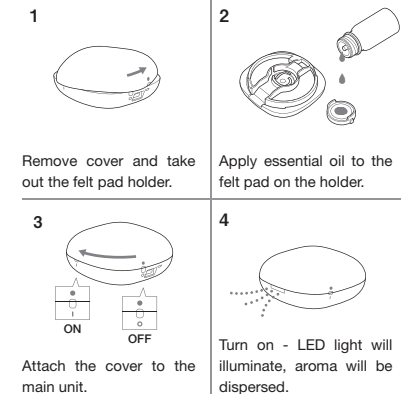
Portable Aroma Diffuser

02494063	\$59.00
----------	---------

A cordless diffuser that lets you enjoy the aroma of essential oil effortlessly whether you are travelling, at home, or in office. The cordless diffuser is powered with built-in rechargeable battery without using water. It can also be operated by USB power supply when at home or office.

Size: Width 75mm X Depth 75mm X Height 37mm
 Weight: Approx. 72g (inclusive of batteries)
 Power supply: Built-in lithium ion rechargeable battery
 Operating time: Approx. 8 hours (automatically turned off after 2 hours)
 *When operating on lithium battery
 Charging time: approx. 3.5 hours
 Accessories: USB cable, felt holder (for alternate use), special pouch

How to use Portable Aroma Diffuser





MUJI
無印良品

www.muji.com/sg/

www.facebook.com/muji.sg

www.instagram.com/mujisg

313@somerset	#B2-38 to 41 & 47 to 49	Tel: 6634 5053
Bugis Junction	#03-10F	Tel: 6336 7885
ION Orchard	#B4-13 to 16	Tel: 6509 9321
Jem	#04-33 to 37	Tel: 6339 2558
Jewel Changi Airport	#02-227 to 229	Tel: 6241 1385
Paragon	#04-36 to 40	Tel: 6735 0123
Plaza Singapura	#01-10 to 17	Tel: 6264 5838
Raffles City	#02-20/22	Tel: 6264 4189
Tampines 1	#03-06/07	Tel: 6509 9733
VivoCity	#02-198	Tel: 6376 8023